

Shade Tree Commission
Minutes
January 10, 2019 at 7:00 pm
Athens City Council Chambers

Meeting Attendees: David Ingram, David Sincoff, Emilie Wood, Lee Gregg, Nancy Walker, John Kotowski, Geoff Buckley, Peter Kostas, Ric Sorris

1. Title 33: Tree Permit, Right-of-Way Issues, Public Land
 - a. Tree pruning on East State St. reported to Ron Lucas, see attached photograph. As part of work on the installation of a traffic light at Home St. and E. State St. some trees were pruned on E. State St. leaving obvious stubs, see photograph attached. Remedial pruning needs to be done to take these limbs back to the trunk. This will help lift the crown of these trees and avoid further pruning at this height.

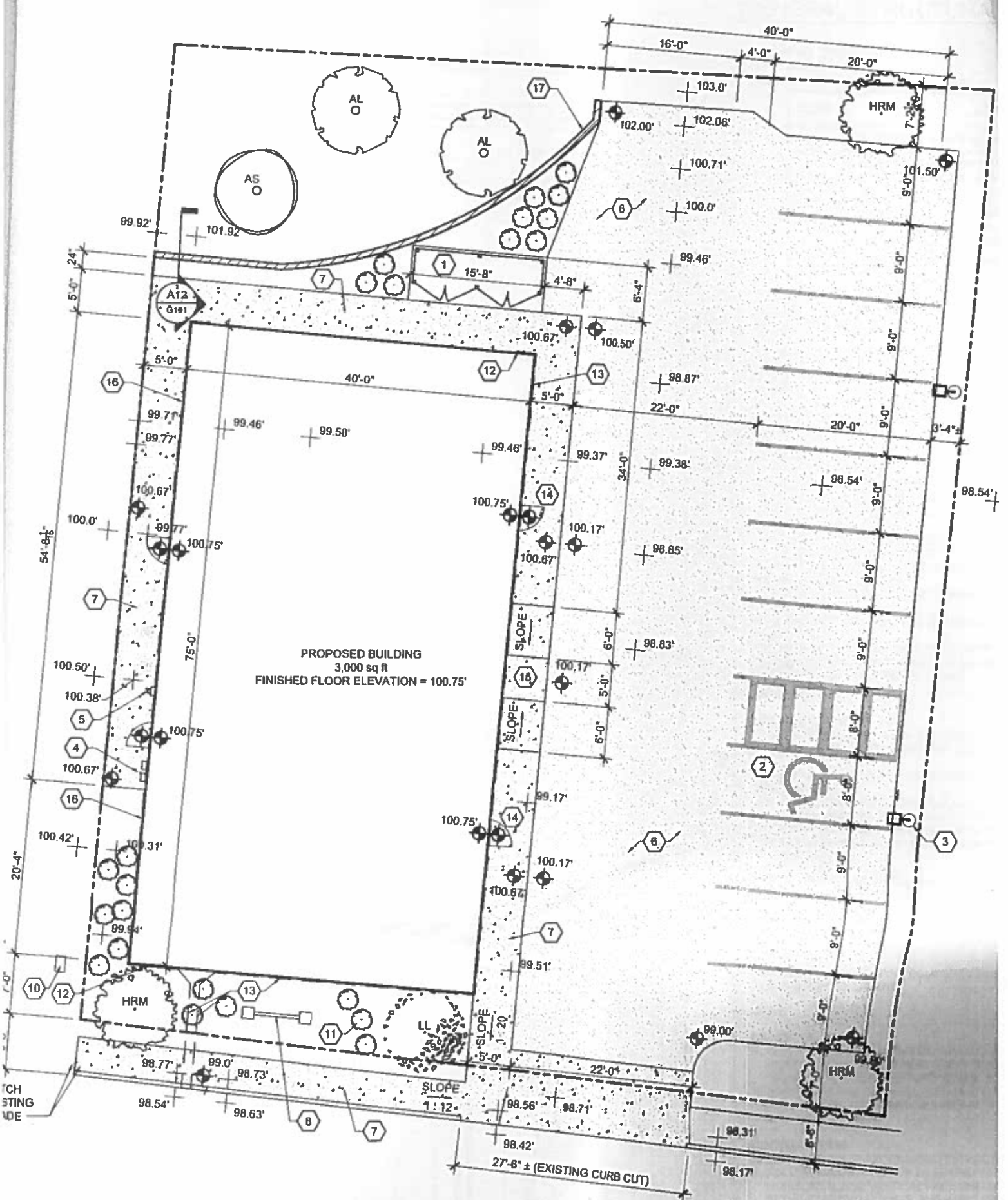
2. Title 37: Landscape Ordinance Issues
 - a. 6 W. Stimson – see attached plan. The site requires six large shade trees. There are three large shade trees planned along the Stimson Ave. edge of the property. Unless the plans for the redevelopment of Stimson Ave. change, these trees will be under AEP's high-voltage lines and should be small trees. These three small trees will count as one large shade tree. This will require one additional large shade tree to be planted elsewhere on the property, possible along the eastern edge. There are four large shade trees proposed for the rear of the lot.

3. Report by Ron Lucas – submitted by email
 - a. Tree City USA application was submitted, and we are awaiting approval.
 - b. Greenleaf has a number of trees available from their 2018 stock. The city will be able to purchase some at a significant discount for a spring planting. Green leaf will provide a list of available trees to me.
 - c. W. State St. pole relocation. AEP is in need of relocating a number of poles on W. State St. The pines near the first ball field on the right as you enter the park will need to be removed. I have chosen a mix of dogwood, serviceberry, crabapple, little leaf linden and honeylocust to replace these trees. AEP will be responsible for the tree replacement.
 - d. A written management plan for the E. State St. riparian corridor restoration project is scheduled to be delivered by March 15th, 2019.
 - e. The Ohio Tree Care conference is in Sandusky, OH February 24th - 26th, 2019.

4. Report by Ric Sirois
 - a. Ric apologized for not being at all the meetings but plans to attend when there are Title 37 issue that need his attendance. He reported on several activities that his office undertakes in particular how his office ensures that developments that involve Title 37 follow that code as well as the many others that he is responsible for overseeing enforcement.

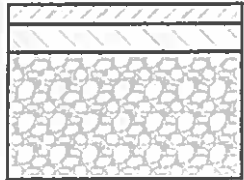
5. Other

- a. From Ann Bonner: 2019 will be a busy year with several state and national Urban and Community Forestry Dates/Events to participate in. Please pass along to your Tree Commission and Parks folks. We hope to see your town participate! For more info on any of these, contact ann.bonner@dnr.state.oh.us
 - i. February 24-26 Ohio Tree Care Conference Kalahari Resort Sandusky, OH
 - ii. May 3 City of Belpre Hosts Annual Tree City USA Awards For SE Ohio
 - iii. June 21 Ohio's Urban Forestry Program Celebrates 40 Years of Service with a 40th Anniversary Urban Forestry Forum at the Ohio Expo Center In Columbus.
 - iv. September TBD Annual Tree Survival School Little Hocking, OH
 - v. November 20-21 Arbor Day Foundation Partners in Community Forestry Conference Cleveland, OH
6. Minutes of the December 13, 2018
 - a. Motion to approve the minutes from David Sincoff, seconded by Lee Gregg. The minutes were approved without objection
7. Next meeting is February 14, 2019 at 7:00 PM in the Council Chamber




D7 SITE PLAN
 SCALE: 1" = 10'-0"

GRADING, MAX. 4'-0" HIGH. SEE A12/C101 DETAIL.



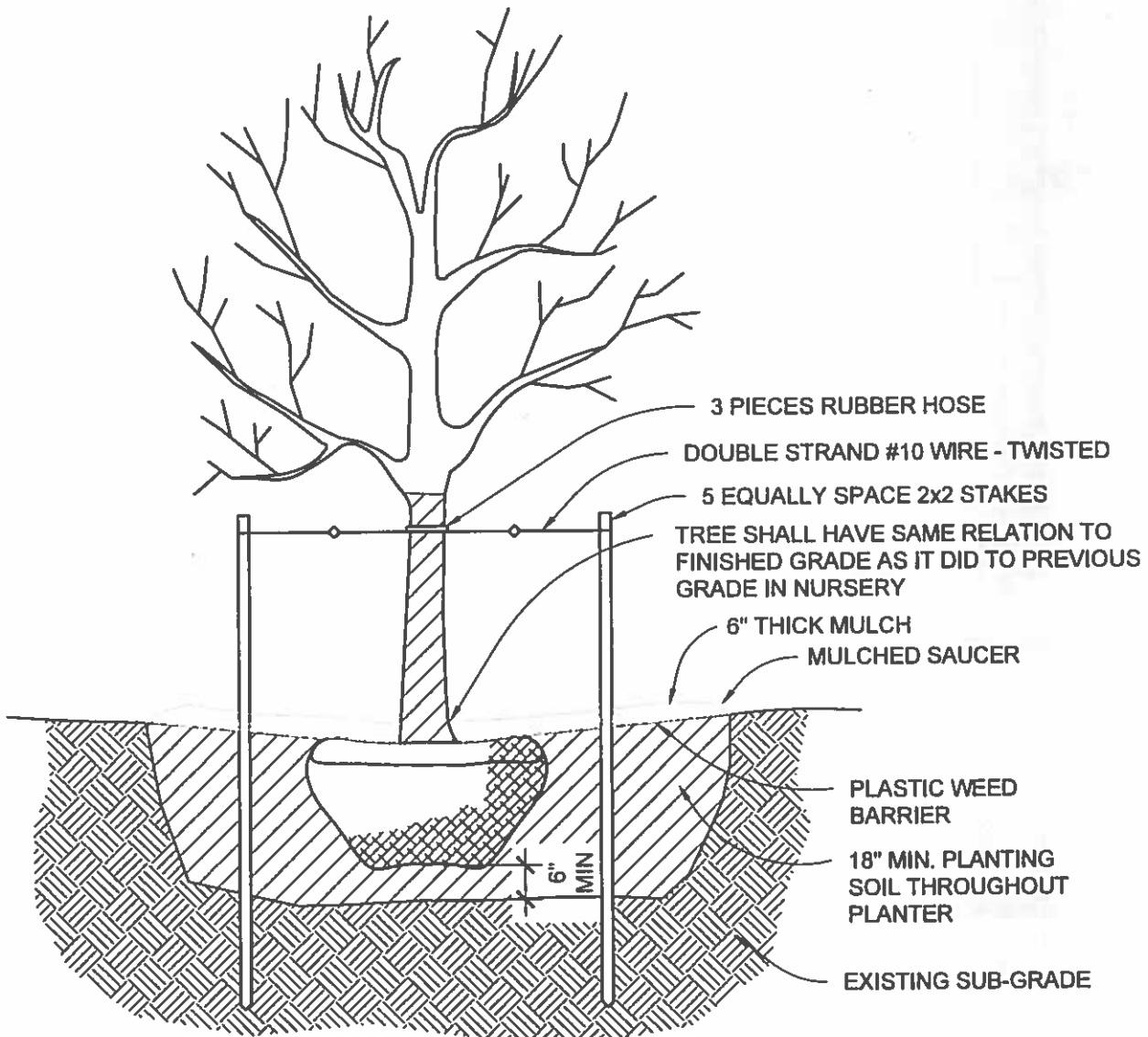
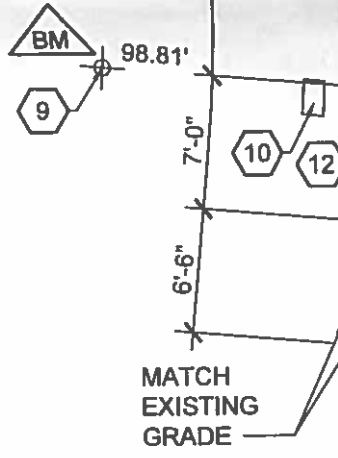
(448) 1-1/4" TYPE 1 ASPHALT, SURFACE COURSE
 (446) 1-3/4" TYPE 2 ASPHALT, INTERMEDIATE COURSE
 (304) 8" AGGREGATE BASE
 COMPACTED SUB-GRADE

G2 ASPHALT DETAIL
 NOT TO SCALE

SHADE TREE REQUIREMENTS

IMPERMEABLE SURFACES
 8,500 S.F. + 1527..... 5.57 TREES
 PERMEABLE SURFACES
 2,647 S.F. + 1767..... 1.50 TREES
 TOTAL TREES REQUIRED..... 7.07 TREES

DECIDUOUS TREES (BY OWNER)			
QUANTITY	KEY	DESCRIPTION	SIZE
3	HRM	ACER X FREEMANII - HYBRID RED MAPLE	1.75"
1	AS	PLATANUS OCCIDENTALS - AMERICAN SYCAMORE	1.75"
2	AL	TILIA AMERICANA - AMERICAN LINDEN	1.75"
1	LL	TILIA CORDATA - LITTLE LEAF LINDEN	1.75"
7	TOTAL		



A2 PLANTING SCHEDULE AND DETAILS
 NOT TO SCALE

1 Δ 2 Δ 3 Δ 4 Δ 5 Δ